

April 2024 Newsletter



Our Summer Fair will be on Friday 5th July 5-7pm. FOG work incredibly hard to make the event successful. We do need parent volunteers to help set up in the afternoon, run a stall for an hour or tidy up afterwards. Please add the date to your diaries and spare an hour as a volunteer. Thank you.

Reading at home with an adult is so very important. Please read with your child regularly.

Reception - daily

Year 1 and 2 - five times a week

Key Stage 2 children - four times a week.

Thank you.



Children should only wear trainers on their PE days. Earrings should be a simple stud. Bags should be a 'book bag' not 'backpack'. Water bottles should be clear plastic and only contain WATER. They should also be NAMED. PE uniform must be worn on PE days. Monday 20th May 3pm - uniform up-cycling sale.



Reception classes would like any donations of metal tea pots and / or cups, please. Not toy sized, normal adult sized. Thank you.



Hopefully the weather will brighten up very soon!

Sun Safe Reminder



SLIP on sun protective clothing

SLOP on SPF 30+ sunscreen before school

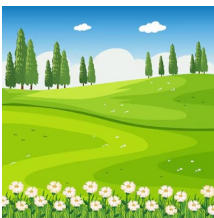
SLAP on a wide brimmed hat

SLIDE on sunglasses

SHADE from the sun whenever possible

Children are allowed to bring a named sunhat and inexpensive sunglasses to wear during the summer months.

Our next 'up-cycling' uniform sale is on Monday 20th May at 3pm in the school hall. All the uniform is of good quality and washed. We suggest a 50p donation for any item.



The week beginning 13th May and / or 20th May are outdoor learning and well-being learning weeks. We will all be planning our learning around a 'well-being' book and using the outdoors. You will be invited into school to share this learning in class. We have sent the details out on ParentHub. Please remember to use the link to let us know you are coming.

INSET Days 2023-24

Friday 12th July, Monday 15th July

INSET Days 2024 -25 currently we have two booked, one on Wednesday 4th September and the second on Monday 4th November. We will set the rest of the INSET days later this term.

Diary Dates

INSET Days 2023-24

Friday 12th July, Monday 15th July

Fri 3 May	1S class assembly 9.05am start
Mon 6 May	May Bank Holiday - school closed
Fri 10 May	4H class assembly 9.05am start
Mon 13 May	Year 3 - 2.30pm outdoor learning workshop for parents/carers (no siblings)
Tues 14 May	Year 6 1.30pm outdoor learning workshop for parents/carers (no siblings)
Wed 15 May	Class photos (will continue on Thursday 16th May)
Thurs 16 May	Year 2 - 2.30pm well-being workshop for parents/carers (no siblings)
Fri 17 May	RD class assembly 9.05am start
Mon 20 May	Uniform up-cycling sale 3pm
Tues 21 May	RF - 2.30pm outdoor learning workshop for parents/carers (no siblings)
Tues 21 May	Year 1 - 2.30pm outdoor learning workshop for parents/carers (no siblings)
Wed 22 May	Nursery - 11am or 2.30pm outdoor learning workshop for parents/carers (no siblings)
Wed 22 May	RD - 2.30pm outdoor learning workshop for parents/carers (no siblings)
Thurs 23 May	Year 4 - 2.30pm well-being workshop for parents/carers (no siblings)
Thurs 23 May	Year 5 - 2.30pm outside well-being workshop for parents/carers (no siblings)
Fri 24 May	20 class assembly 9.05am start
Fri 24 May	Break up for half term at the normal time
Griffe Field holiday club	
Mon 3 June	Summer 2 term starts
Wed 5 June	New Reception meeting for parents 9.15am
Wed 5 June	FOG meeting 7pm - all welcome (location - Hollybrook)
Fri 7 June	RF class assembly 9.05am start
Fri 7 June	Freeze pop Friday will be starting. (20p per freeze pop and exact change only)

Places for Wellbeing support and advice



This website from the NHS offers expert advice and practical tips to help you look after your child's mental health and wellbeing as well as the rest of the family.

<https://www.nhs.uk/oneyou/every-mind-matters/>

Young Minds – <https://youngminds.org.uk/>

