



Year 5 Art: Autumn Silk Painting(resist) Mountain Theme

Prior Learning

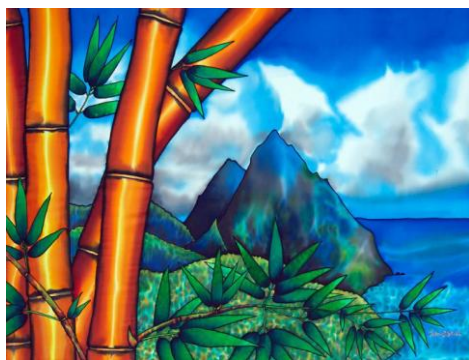
- Year 3 wax resist painting.

Sticky Knowledge

- Know how to use the Gutta resist, silk painting technique.
- Know how to explore the use of line to form outlines.
- Know how to design a mountain composition.
- Research the work of an artist and use their work to replicate a style – Jean Baptiste.



Gutta



Jean Baptiste - Silk artist



Vocabulary

Gutta	Solvent based Gutta is a thick substance that is made from latex. It is used to form boundary lines when painting on silk. Gutta comes in clear, black, gold metallic, silver metallic and several colours.
dye	A natural or synthetic substance used to add a colour to or change the colour of something.
resist technique	Gutta is used to "resist" or prevent the dye from reaching all the cloth, thereby creating a pattern/image.
line	A line is a mark whose length is greater than its width. They can be straight or curved; they can be horizontal, vertical or diagonal; and they can change direction. Lines can be made with pens, pencils, paintbrushes and more.
outline	A line or set of lines enclosing a shape.
composition	How the elements of art work together to produce an overall effect.
colour	Colour is the light that's reflected off an object. It has three main facets: hue, value and intensity.